

NEC

Driver Installation Instructions

press ESC at any time for full Acrobat™ controls

click here for

Contents

click here for

Introduction

click here for

Installation

Contents

Introduction

Overview	3
System requirements	3

Installation

Preparation	4
Installation procedure	4

Uninstall procedure

Introduction

Overview

The modem drivers have to be installed before your phone can link to your computer. Once installed, they enable you to use the **GPRS Wizard** to connect your computer to the Internet using your phone's built-in modem (if the phone has a GPRS SIM card).

This CD should be accompanied by a data cable to connect a USB port on a PC to the mobile.



Before you use GPRS-Wizard, you need to install the modem drivers.

System requirements

The following system requirements are the minimum necessary for the drivers to work:

- **CPU:** Pentium 3, 500 MHz or better
- **Memory:** Minimum required by the operating system (see **Operating System** below)
- **Disk Space:** 20 Mbytes or more
- **Operating System:** Windows™ 2000 Professional (SP4)
Windows™ XP Home (SP1)
Windows™ XP Professional (SP1)
- **Screen Resolution:** 800 x 600 or better
- **PC Interface:** USB port
- **PDF Reader:** Adobe™ Acrobat™ Reader 4 or above
(Downloadable from www.adobe.com)



All trademarks acknowledged.

Installation

Preparation

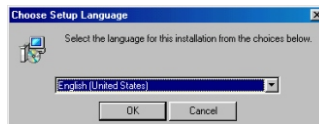
Carry out the following before you start the installation process:

- Turn off the mobile phone and ensure the PC link cable is **NOT** connected to your computer
- Insert the CD-ROM into the CD-ROM drive
- Using Windows™ Explorer, navigate to the contents of the CD-ROM and double click on **Setup.exe**

Installation procedure

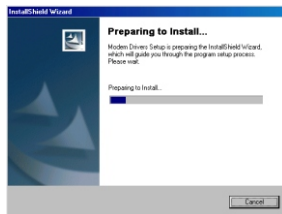
When the installation CD has auto-run or **setup.exe** has been double clicked, the **Choose setup language** dialog will be displayed (see right).

Select the required language from the list (if necessary) and click **OK**.



The windows shown may vary in appearance according to your computer's operating system.

When you have selected the required setup language, the **Preparing to Install** window will be displayed (see right).



The following languages are available:
Chinese (simplified)
Chinese (traditional)
Dutch
English
French
German
Italian
Spanish

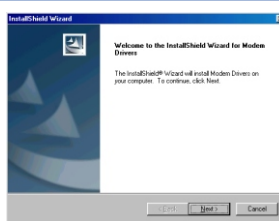
The installation wizard starts and after some preparation windows, a window will be displayed prompting you to ensure that although the USB lead is plugged into your computer but your phone **must not** be plugged into the USB lead.

Click **OK** to continue.



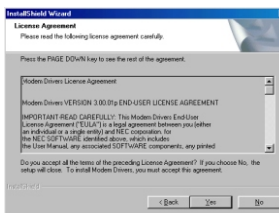
When you have ensured the phone is not plugged into the USB lead, the **Welcome** window will now be displayed (see right).

Click **Next>** to continue



The **License** window will now be displayed (see right).

Press the **Page Down** key on your computer keyboard to read the remaining part of the agreement and then click **Yes** if you agree with the terms and conditions of the license.

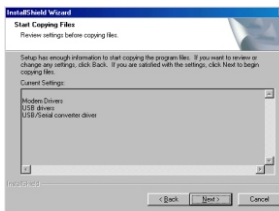


*If you do not agree with the terms and conditions of the license, click **No** and the installation wizard will terminate.*

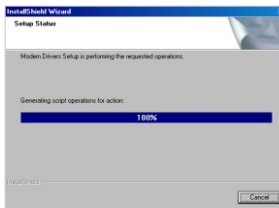
When you have agreed to the terms and conditions of the license, the **Start Copying Files** window will be displayed (see right).

This window displays the drivers that will be installed.

With the required settings displayed, click the **Next>** button.

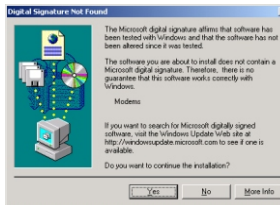


When you have accepted the settings, the program files will be copied and the **Setup Status** window will be displayed, showing progress (see right).



During the installation a **Digital Signature Not Found** window may be displayed (see right).

Click **Yes** to continue.

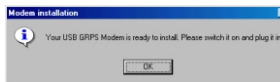


This software is compatible with the Operating Systems listed on page 3. Any warning to the contrary, from Microsoft or any other source, can be ignored.

When file copying is complete, the information window shown right will be displayed.

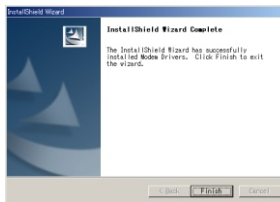
Turn your phone on and connect it to a USB port on your computer with the USB cable provided.

 *If you have not already installed the USB drivers, your computer will now install them. Wait for this process to finish before clicking **OK**.*



When the installation is complete, the **InstallShield Wizard Complete** window will be displayed (see right).

To end the installation process, click the **Finish** button.



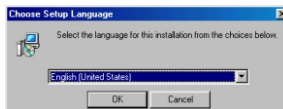
Uninstall procedure

To uninstall **Modem Drivers**, proceed as follows:

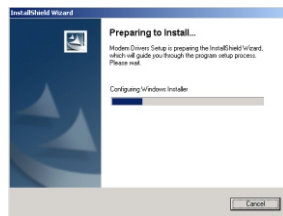
- Insert the CD-ROM into the CD-ROM drive
- Using Windows™ Explorer, navigate to the contents of the CD-ROM and double click on **Setup.exe**

When the installation CD has auto-run or **setup.exe** has been double clicked, the **Choose setup language** dialog will be displayed (see right).

Select the required language from the list (if necessary) and click **OK**.

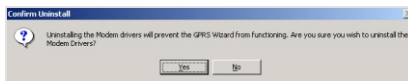


When you have selected the required setup language, the **Preparing to Install** window will be displayed (see right).



When the installation software has detected an existing installation, the prompt shown right will be displayed.

If you are sure you wish to uninstall the modem drivers, click **Yes** to continue.



A status window will be displayed while the uninstallation process is carried out and then the **InstallShield Wizard Complete** window is displayed (see right).

Click **Finish** to restart your computer now or select the **No, I will restart my computer later** radio button and then **Finish** as required.

